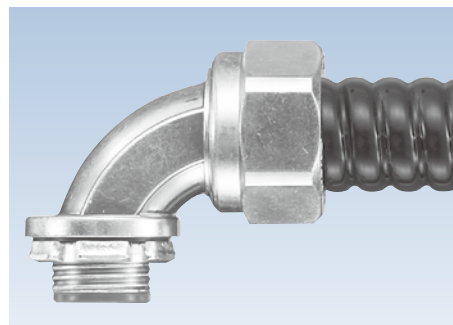


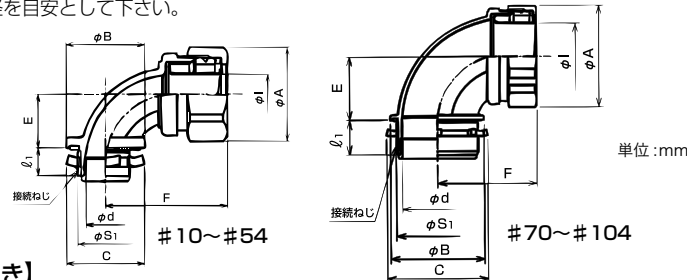
90° 形コネクタ ノックアウト接続用

Material and Environmental properties table for KM 90-degree connector (left page).

ケーブルクセス+制御盤



- Bulleted text describing the connector's use and specifications.



Unit: mm and other technical notes.

【管用平行おねじ付き】

Table of connector specifications with threaded pipe parallel connection.

Notes 1 and 2 regarding product variations and UL listings.

【メートルおねじ付き】

Table of connector specifications with metric threaded connection.

Note regarding UL listing for metric versions.

【NPTおねじ付き】

Table of connector specifications with NPT threaded connection.



Insulation bushing is not required.



Insulation bushing is not required.



Insulation bushing is not required.

90° 形コネクタ ノックアウト接続用

Material and Environmental properties table for KM 90-degree connector (right page).

ケーブルクセス+制御盤

Material and Environmental properties table for KM 90-degree connector (right page).



Insulation bushing is not required.

【薄鋼電線管おねじ付き】

Table of connector specifications with thin steel conduit connection.

樹脂製/黒色品

Material and Environmental properties table for resin/black products.



Lock nut and ferrule are steel.

【管用平行おねじ付き】

Table of connector specifications with threaded pipe parallel connection (resin).

Note regarding the exclusion of KM90BGP 10.

Material and Environmental properties table for resin/black products.



Lock nut and ferrule are steel.

【薄鋼電線管おねじ付き】

Table of connector specifications with thin steel conduit connection (resin).

Note regarding the exclusion of KM90BCP 10.

ステンレス製

- Bulleted text about stainless steel connector specifications.